



AL FARIS

Date: 22/02/2019

PRESS RELEASE

AL FARIS GROUP
Head Office: Dubai, UAE

FOR IMMEDIATE RELEASE

HOW AL FARIS OVERCOME DAY-TO-DAY CHALLENGES IN THE HEAVY TRANSPORT INDUSTRY

All heavy transport projects come with challenges and obstacles related to either the load or the route. With over 26 years of Industry knowledge and experience, all our engineering studies & planning, route surveys & planning are all done in-house by our competent engineering team.

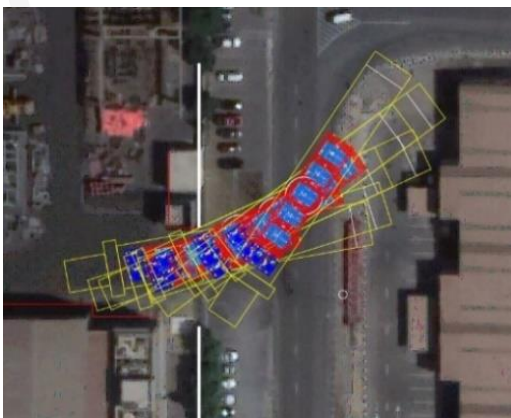
LOAD ANALYSIS & MANOUVERING TECHNIQUES THROUGH NARROW ROADS, BOTTLE NECKS & ROUNDABOUTS

In cases of **unknown COG of the load**, Al Faris have the capability of weighing and finding the COG in order to place load accurately onto the trailer. However if there is any limitation/ obstruction in aligning the COG of the load and trailer, Al Faris' engineering team will adopt the best solution to maintain the needed axle pressure for safe and timely project delivery.

In cases of **COG at a higher level of the load**, Al Faris' engineering team will propose additional counter weights / support structures to bring down the COG level during the maneuvering process.

Al Faris' team goes through continuous in-house training to enhance their skills with latest industry techniques used for safe and timely project delivery.

For **roundabouts and other narrow routes** we lay customized in-house produced wooden wedges to support smooth maneuvering of the trailer.



Our Engineering and technical teams conduct a comprehensive study on routes and map-out a maneuvering plan for narrow roads, bottle necks and roundabouts.

Al Faris' team goes through continuous in-house training to enhance their maneuvering skills with utmost precision.

For **unstable loads during transportation**, we fabricate engineered in-house customised packing material matching the profile of the load and also other engineered structures for support.

For media related queries and other press releases contact ninoshka@alfarisuae.com



AL FARIS

ROUTE SURVEYS, PLANNING & CREATIVE TECHNIQUES TO OVERCOME ROUTE OBSTACLES

An extensive route survey and analysis helps us investigate all the possibilities for transporting the cargo and identifying obstacles prior to execution. This is a critical step for all heavy transport projects done by our in-house team of Engineers and technicians.

In cases of **heavy loads moving over gas/pipe lines – underground utilities and railway tracks**, we use customised temporary base structures to place over the section where there are gas/pipe lines under the road.

Our technical team study road bearing capacities and manage to cross the gas/oil line by maintaining the minimum required axle load.

****Special permissions with local authorities for crossing gas/pipe lines are mandatory and are taken care of by Al Faris.***

Prior to loading, customised non-conducting material is placed on load and the trailer if route survey shows **over-head electric lines**. We strictly adhere to and maintain the minimum required distance from load and object.

If the load cannot pass under the **over-head obstructions (Gantries & Electric lines)**, by-pass and other route options are surveyed and prepared with engineering requirements and special permissions. For **route options with loose gravel/sand dunes** graders are used to clear the pathway and customised steel plates are used to compact the route.

For over-sized loads that need **road modifications (removal of street furniture and lamp posts)**, these are planned and coordinated with approved vendors from the local authorities with prior permissions. Traffic management approval involving police car on roads and opposite direction load movement is taken care of prior to job execution.



For media related queries and other press releases contact ninoshka@alfarisuae.com